
Core Range 2021

LIEBHERR

Refrigeration and freezing



BLU
Performance

A new dimension in freshness

The BluPerformance range is characterised by premium-quality materials, perfect craftsmanship in every detail, and precision touchscreen electronic controls. The integration of all the refrigeration components into the base of the appliance, together with optimised electronic controls, ensures maximum energy efficiency, a greater net capacity, and enhanced freezer compartment ergonomics. BioFresh and BioCool technologies keep stored food fresher for longer.

The elegant and timeless design of the BluPerformance range ensures that these appliances are a guaranteed highlight in any home and that they will satisfy for many years to come.



Power
Cooling

Greater performance



Touch
Electronic

User-friendly touch operation



LED

Perfect illumination

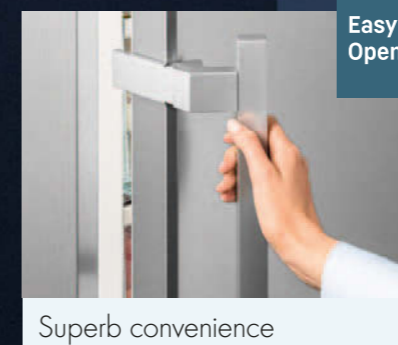


Bio
Fresh

Greater freshness quality



Better energy efficiency



Easy
Open

Superb convenience



Glass
Line

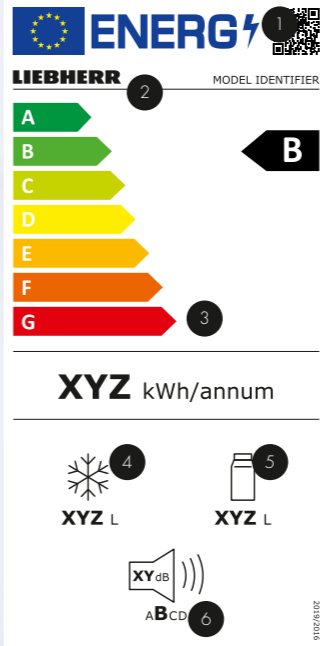
High quality materials

The new EU energy label for electrical appliances.


It is now once again possible to distinguish more easily between efficient and inefficient appliances. With the reform of the energy label, appliances will once again be rated from A to G on the efficiency scale. This will make things much clearer for you in future.

Technology is developing all the time. And we also never stand still.

We are constantly working on features that make everyday work easier, optimise storage and reduce consumption. We were one of the first manufacturers in Europe to develop fridges and freezers in the highest efficiency class. And that is also our aim for the future. Fridges and freezers work around the clock and are responsible for up to 15 percent of the electricity bill. As our appliances consume less energy, they make an important contribution to climate protection.



- 1 The QR code for identifying the product in the EPREL (European Product Database for Energy Labeling) EU database.
- 2 The model identifier for identifying the product manually in the EPREL EU database, e.g. via the article number.
- 3 The new A to G efficiency scale. However G is only intended for wine coolers.
- 4 The sum of the volumes of the frozen compartment(s).
- 5 The sum of the volumes of the chill compartment(s) and the unfrozen compartment(s).
- 6 The noise level is now also classified into classes A to D.



A

B

C

D

E

F

G

Find out more about the new energy label:
home.liebherr.com/energylabel

BioFresh-Safe

Freshness has a name: BioFresh

BioFresh guarantees the perfect temperature for much longer freshness. At a temperature of just over 0°C and with the ideal humidity, fresh food can keep its appetising appearance and retain healthy vitamins and minerals for considerably longer than in a normal fridge compartment. While the DrySafe is particularly suitable for storing meat, fish and dairy products, the high humidity in the Fruit & Vegetable safe can prevent fruit and vegetables from drying out and helps preserve stored goods for an even longer period. The safes are easy to pull out and remove even at a door opening angle of 90°.

Vitamins for a healthy diet

It goes without saying that it is extremely important for newly purchased and freshly harvested foods to be stored properly so that their nutrients are preserved for longer. The shelf life and freshness of most fruit and vegetables can be significantly extended by storing them in a fridge, particularly in a BioFresh compartment. The vitamin content of fruit and vegetables has been found to increase during storage in a BioFresh compartment.

The perfect climate

With high humidity, the HydroSafe offers a perfect storage climate for fruit and vegetables. The drier conditions in the DrySafe are ideal for storing of meat, fish and dairy products. The moist HydroSafe climate can be changed to a dry DrySafe climate using the humidity slide control.

BioFresh-Safe



SBSes 8496
PremiumPlus

←121→



BioFresh-Plus offers even more flexibility for the individual storage of food. The adjustable temperature range of 0 °C and -2 °C keeps various food, such as fruit, vegetables, fish and seafood, as well as meat and dairy products, fresh for significantly longer than in a conventional refrigeration compartment. The BioFresh-Plus safe includes a versatile **Fish & Seafood Box**.



The **IceMaker** provides you with perfect ice cubes for every occasion. Whether for a cool drink or a big party - there will always be enough ice cubes. The IceMaker, which you can switch off at any time, automatically keeps your supplies topped up.



SBSbs 8683
Premium

←121→

SWTNes 4285
PremiumPlus Wine/Freezer

- Duo Cooling
- No Frost
- Soft System
- Ice Maker
- Smart Steel
- Smart Device ready
- Wine

Energy efficiency class: **D** ¹_{A G}

Energy consumption year/24 hrs: 187/0.512 kWh ¹

Max. Bordeaux bottles 0.75 l: 48

Total volume²: 289 litre

Volume: Wine compartment: 156.4 litre/Freezer compartment: 132.8 litre

Noise output/Sound power level: 37 dB(A)/C

Climate rating: SN-T (from +10 °C to +43 °C)

Door/side walls: Stainless steel with SmartSteel/Stainless steel with SmartSteel

Exterior dimensions in cm (h/w/d): 185/60/68.5 ¹

SKBes 4380
PremiumPlus Fridge

- Bio Fresh Plus
- Soft System
- Smart Steel
- Smart Device ready
- Soft-Telescopic

Energy efficiency class: **D** ¹_{A G}

Energy consumption year/24 hrs: 133/0.364 kWh ¹

Total volume²: 371 litre

Volume: Fridge: 235.7 litre/BioFresh compartment: 135.8 litre

Noise output/Sound power level: 36 dB(A)/C

Climate rating: SN-T (from +10 °C to +43 °C)

Door/side walls: Stainless steel with SmartSteel/Stainless steel with SmartSteel

Exterior dimensions in cm (h/w/d): 185/60/66.5 ¹

SGNbs 4385
Premium Freezer

- No Frost
- Soft System
- LED
- Ice Maker
- Black Steel
- Smart Device ready
- Telescopic Rails

Energy efficiency class: **D** ¹_{A G}

Energy consumption year/24 hrs: 198/0.542 kWh ¹

Total volume²: 276 litre

Noise output/Sound power level: 37 dB(A)/C

Climate rating: SN-T (from +10 °C to +43 °C)

Door/side walls: BlackSteel with SmartSteel/BlackSteel with SmartSteel

Exterior dimensions in cm (h/w/d): 185/60/66.5 ¹

SKBbs 4370
Premium Fridge

- Bio Fresh
- Soft System
- Black Steel
- Smart Device ready
- Soft-Telescopic

Energy efficiency class: **D** ¹_{A G}

Energy consumption year/24 hrs: 133/0.364 kWh ¹

Total volume²: 372 litre

Volume: Fridge: 235.7 litre/BioFresh compartment: 137.2 litre

Noise output/Sound power level: 36 dB(A)/C

Climate rating: SN-T (from +10 °C to +43 °C)

Door/side walls: BlackSteel with SmartSteel/BlackSteel with SmartSteel

Exterior dimensions in cm (h/w/d): 185/60/66.5 ¹

¹ To achieve the indicated energy consumption level, the wall spacers provided with the appliance must be used. These increase the appliance depth by approximately 1.5 cm. If the wall spacers are not used, the appliance will remain fully functional, but will have a slightly higher energy consumption level.

² In accordance with Regulation EU 2019/2016 we indicate the total volume to the nearest integer (rounded off) and the volume of the frozen compartments and refrigeration compartments to one place after the decimal point. You can find the full range of efficiency classes at page 5. According to (EU) 2017/1369 6a.



Side-by-Side kit available as an accessory (Order no. 9900 004).



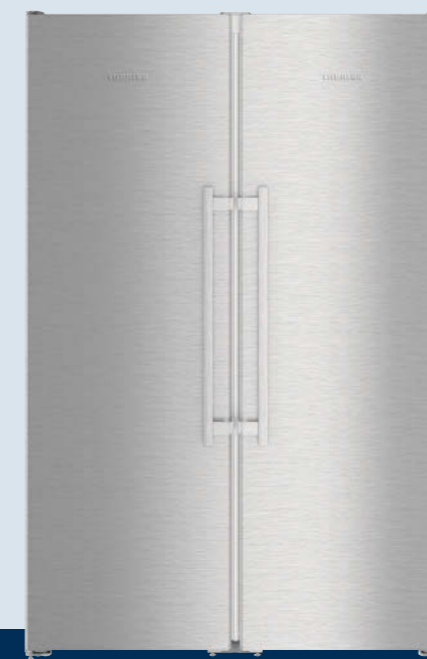
The **NoFrost** system provides rapid, fanassisted, frost-free freezing for the safe, longterm storage of food. The NoFrost technology creates a much larger storage capacity and keeps the freezer constantly frostfree.



Find out more about NoFrost: nofrost.liebherr.com



SmartSteel significantly reduces the visibility of fingerprints. The high-quality stainless steel finish makes SmartSteel surfaces particularly easy-to-clean and far more scratch-resistant. The **sturdy handle** with its refined, premiumquality appearance and an **integrated opening mechanism** ensures easy and effortless opening of the door.



SBSes 8773
Premium



SBSef 7242
Comfort



SGNes 4375
Premium Freezer

- No Frost
- Soft System
- LED
- Smart Steel
- Smart Device ready
- Telescopic Rails

Energy efficiency class: **D** ¹

Energy consumption year/24 hrs: 198/0.542 kWh ¹

Total volume²: 276 litre

Noise output/Sound power level: 37 dB(A)/C

Climate rating: SN-T (from +10 °C to +43 °C)

Door/side walls: Stainless steel with SmartSteel/Stainless steel with SmartSteel

Exterior dimensions in cm (h/w/d): 185/60/66.5 ¹

SKBes 4370
Premium Fridge

- Bio Fresh
- Soft System
- Smart Steel
- Smart Device ready
- Soft-Telescopic

Energy efficiency class: **D** ¹

Energy consumption year/24 hrs: 133/0.364 kWh ¹

Total volume²: 372 litre

Volume: Fridge: 235.7 litre/BioFresh compartment: 137.2 litre

Noise output/Sound power level: 36 dB(A)/C

Climate rating: SN-T (from +10 °C to +43 °C)

Door/side walls: Stainless steel with SmartSteel/Stainless steel with SmartSteel

Exterior dimensions in cm (h/w/d): 185/60/66.5 ¹

SGNef 3036
Comfort Freezer

- No Frost
- Smart Steel

Energy efficiency class: **F** ¹

Energy consumption year/24 hrs: 306/0.838 kWh ¹

Total volume²: 268 litre

Noise output/Sound power level: 41 dB(A)/C

Climate rating: SN-T (from +10 °C to +43 °C)

Door/side walls: Stainless steel with SmartSteel/silver

Exterior dimensions in cm (h/w/d): 185.2/60/62.3 ¹

SKef 4260
Comfort Fridge

- Super Silent
- Smart Steel

Energy efficiency class: **F** ¹

Energy consumption year/24 hrs: 151/0.413 kWh ¹

Total volume²: 385 litre

Noise output/Sound power level: 33 dB(A)/B, SuperSilent

Climate rating: SN-T (from +10 °C to +43 °C)

Door/side walls: Stainless steel with SmartSteel/silver

Exterior dimensions in cm (h/w/d): 185.2/60/62.3 ¹

¹ To achieve the indicated energy consumption level, the wall spacers provided with the appliance must be used. These increase the appliance depth by approximately 3.5 cm (1.5 cm BluPerformance appliances). If the wall spacers are not used, the appliance will remain fully functional, but will have a slightly higher energy consumption level.

² In accordance with Regulation EU 2019/2016 we indicate the total volume to the nearest integer (rounded off) and the volume of the frozen compartments and refrigeration compartments to one place after the decimal point. You can find the full range of efficiency classes at page 5. According to (EU) 2017/1369 6a.



CBNes 6256

Fridge-freezer



The **IceMaker** with fixed water connection provides you with a constant supply of ice cubes for every occasion. An integrated **water filter** ensures optimum water quality at all times. The electronic display indicates when the water filter needs replacing. The **NoFrost** technology keeps the freezer constantly frostfree.

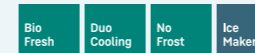


Both **BioFresh drawers** are mounted on **telescopic rails** which extend effortlessly providing a full view of your food, which is easily accessible. The lateral **LED lights** ensure perfect illumination of the drawers. The versatile glass/bottle shelves can be used depending on your personal preference.



← 91 →

CBNes 6256 PremiumPlus



Energy efficiency class: **F**

Energy consumption year/24 hrs: 341/0.934 kWh

Total volume¹: 522 litre

Volume: Fridge: 292.2 litre/BioFresh compartment: 70.6 litre/Freezer compartment: 159.5 litre

Noise output/Sound power level: 42 dB(A)/D

Climate rating: SN-T (from +10 °C to +43 °C)

Door/side walls: Stainless steel/stainless steel

Exterior dimensions in cm (h/w/d): 203.9/91/61.5

¹ In accordance with Regulation EU 2019/2016 we indicate the total volume to the nearest integer (rounded off) and the volume of the frozen compartments and refrigeration compartments to one place after the decimal point. You can find the full range of efficiency classes at page 5. According to (EU) 2017/1369 6a.



CBNef 5735

Fridge-freezers



In the **BioFresh** compartments food retains its healthy vitamins, aroma and appetising appearance significantly longer than in a conventional fridge. Through its advanced technology the temperature is accurately kept at just above 0°C.



The **NoFrost** system from Liebherr provides rapid, fan-assisted, frost-free freezing for the safe, long-term storage of food. The NoFrost technology creates a much larger storage capacity and keeps the freezer constantly frost-free to make defrosting a thing of the past.



← 70 →



← 60 →

CBNef 5735 Comfort	Bio Fresh	Duo Cooling	No Frost	Smart Steel	Smart Device ready
Energy efficiency class: D ¹					
Energy consumption year / 24 hrs: 234/0.641 kWh ¹					
Total volume ² : 392 litre					
Volume: Fridge: 168.5 litre/BioFresh compartment: 112.6 litre/ Freezer compartment: 111.6 litre					
Noise output/Sound power level: 36 dB(A)/C					
Climate rating: SN-T (from +10 °C to +43 °C)					
Door/side walls: Stainless steel with SmartSteel/silver					
Exterior dimensions in cm (h/w/d): 201/70/66.5 ¹					

CBNef 4835 Comfort	Bio Fresh	Duo Cooling	No Frost	Super Silent	Smart Steel	Smart Device ready
Energy efficiency class: D ¹						
Energy consumption year / 24 hrs: 227/0.621 kWh ¹						
Total volume ² : 351 litre						
Volume: Fridge: 149.2 litre/BioFresh compartment: 99.1 litre/ Freezer compartment: 103.5 litre						
Noise output/Sound power level: 33 dB(A)/B, SuperSilent						
Climate rating: SN-T (from +10 °C to +43 °C)						
Door/side walls: Stainless steel with SmartSteel/silver						
Exterior dimensions in cm (h/w/d): 201/60/66.5 ¹						

¹ To achieve the indicated energy consumption level, the wall spacers provided with the appliance must be used. These increase the appliance depth by approximately 1.5 cm. If the wall spacers are not used, the appliance will remain fully functional, but will have a slightly higher energy consumption level.
² In accordance with Regulation EU 2019/2016 we indicate the total volume to the nearest integer (rounded off) and the volume of the frozen compartments and refrigeration compartments to one place after the decimal point. You can find the full range of efficiency classes at page 5. According to (EU) 2017/1369 6a.



The **LED ceiling light** creates a high-class ambience within the refrigerator. Its beautifully designed, space-efficient housing is centrally positioned to provide a delightfully even illumination.



The high-resolution, high-contrast **2.4" touchscreen display** is integrated behind the door and enables **accurate temperature settings**.



The **bottle shelf** is the practical and elegant answer for storing drinks. As many as five bottles can be chilled and stored neatly.



The space-saving integrated **LED light** ensures that the whole interior of the refrigerator is evenly and harmoniously lit. With its low energy consumption, the long-lasting LED light is an environmentally friendly solution for a perfect overview of the food in the fridge.



← 60 →



← 55 →



← 55 →



← 55 →

CNeF 3515
Comfort

- Duo Cooling
- No Frost
- Smart Steel
- Smart Device ready

Energy efficiency class: **E A₆¹**

Energy consumption year/24 hrs: 246/0.674 kWh¹

Total volume²: 317 litre

Volume: Fridge: 222.4 litre/Freezer compartment: 95.3 litre

Noise output/Sound power level: 38 dB(A)/C

Climate rating: SN-T (from +10 °C to +43 °C)

Door/side walls: Stainless steel with SmartSteel/silver

Exterior dimensions in cm (h/w/d): 181.7/60/62.5¹

CUel 3331

- Smart Frost
- Stainless Steel Look

Energy efficiency class: **F A₆¹**

Energy consumption year/24 hrs: 280/0.767 kWh¹

Total volume²: 296 litre

Volume: Fridge: 212.4 litre/

Freezer compartment: 84.1 litre

Noise output/Sound power level: 38 dB(A)/C

Climate rating: SN-ST (from +10 °C to +38 °C)

Door/side walls: Stainless steel look/silver

Exterior dimensions in cm (h/w/d): 181.2/55/63¹

CUel 2831

- Smart Frost
- Stainless Steel Look

Energy efficiency class: **F A₆¹**

Energy consumption year/24 hrs: 240/0.657 kWh¹

Total volume²: 265 litre

Volume: Fridge: 212.4 litre/

Freezer compartment: 53.5 litre

Noise output/Sound power level: 38 dB(A)/C

Climate rating: SN-ST (from +10 °C to +38 °C)

Door/side walls: Stainless steel look/silver

Exterior dimensions in cm (h/w/d): 161.2/55/63¹

CU 2831

- Smart Frost

Energy efficiency class: **F A₆¹**

Energy consumption year/24 hrs: 240/0.657 kWh¹

Total volume²: 265 litre

Volume: Fridge: 212.4 litre/

Freezer compartment: 53.5 litre

Noise output/Sound power level: 38 dB(A)/C

Climate rating: SN-ST (from +10 °C to +38 °C)

Door/side walls: white/white

Exterior dimensions in cm (h/w/d): 161.2/55/63¹

¹ To achieve the indicated energy consumption level, the wall spacers provided with the appliance must be used. These increase the appliance depth by approximately 3.5 cm. If the wall spacers are not used, the appliance will remain fully functional, but will have a slightly higher energy consumption level.

² In accordance with Regulation EU 2019/2016 we indicate the total volume to the nearest integer (rounded off) and the volume of the frozen compartments and refrigeration compartments to one place after the decimal point. You can find the full range of efficiency classes at page 5. According to (EU) 2017/1369 6a.



Smart Frost

With the **SmartFrost** technology, ice build-up is greatly reduced. This makes defrosting rarely necessary. The interior walls of the freezer compartment are smooth and easy to clean. Freezer drawers and glass shelves made of safety glass can be removed easily.



The space-saving integrated **LED light** ensures that the whole interior of the refrigerator is evenly and harmoniously lit. With its low energy consumption, the long-lasting LED light is an environmentally friendly solution for a perfect overview of the food in the fridge.



The distinctive **GlassLine** equipment puts the finishing touches to the high quality interior. The shelves are made of safety glass. The sectioned, slide-under glass shelf lends itself to versatile use as it can be inserted at different heights, as required.



Ergonomically designed, the extra deep transparent **vegetable compartment** is easy-to-clean and provides ample storage for fruit and vegetables.



← 55 →



← 55 →



← 55 →



← 55 →



← 55 →

CT 2931

Smart Frost

Energy efficiency class: **F A G**¹

Energy consumption year/24 hrs: 231/0.632 kWh¹

Total volume²: 270 litre

Volume: Fridge: 218.6 litre/Freezer compartment: 51.5 litre

Noise output/Sound power level: 37 dB(A)/C

Climate rating: SN-T (from +10 °C to +43 °C)

Door / side walls: white / white

Exterior dimensions in cm (h/w/d): 157.1 / 55 / 63¹

CTel 2531

Smart Frost

Stainless Steel Look

Energy efficiency class: **F A G**¹

Energy consumption year/24 hrs: 212/0.580 kWh¹

Total volume²: 233 litre

Volume: Fridge: 189.5 litre/Freezer compartment: 43.8 litre

Noise output/Sound power level: 37 dB(A)/C

Climate rating: SN-T (from +10 °C to +43 °C)

Door / side walls: Stainless steel look / silver

Exterior dimensions in cm (h/w/d): 140.1 / 55 / 63¹

CT 2531

Smart Frost

Energy efficiency class: **F A G**¹

Energy consumption year/24 hrs: 212/0.580 kWh¹

Total volume²: 233 litre

Volume: Fridge: 189.5 litre /

Freezer compartment: 43.8 litre

Noise output/Sound power level: 37 dB(A)/C

Climate rating: SN-T (from +10 °C to +43 °C)

Door / side walls: white / white

Exterior dimensions in cm (h/w/d): 140.1 / 55 / 63¹

CTel 2131

Smart Frost

Stainless Steel Look

Energy efficiency class: **F A G**¹

Energy consumption year/24 hrs: 198/0.542 kWh¹

Total volume²: 196 litre

Volume: Fridge: 152.2 litre /

Freezer compartment: 43.8 litre

Noise output/Sound power level: 37 dB(A)/C

Climate rating: SN-T (from +10 °C to +43 °C)

Door / side walls: Stainless steel look / silver

Exterior dimensions in cm (h/w/d): 124.1 / 55 / 63¹

CT 2131

Smart Frost

Energy efficiency class: **F A G**¹

Energy consumption year/24 hrs: 198/0.542 kWh¹

Total volume²: 196 litre

Volume: Fridge: 152.2 litre /

Freezer compartment: 43.8 litre

Noise output/Sound power level: 37 dB(A)/C

Climate rating: SN-T (from +10 °C to +43 °C)

Door / side walls: white / white

Exterior dimensions in cm (h/w/d): 124.1 / 55 / 63¹

¹ To achieve the indicated energy consumption level, the wall spacers provided with the appliance must be used. These increase the appliance depth by approximately 3.5 cm. If the wall spacers are not used, the appliance will remain fully functional, but will have a slightly higher energy consumption level.

² In accordance with Regulation EU 2019/2016 we indicate the total volume to the nearest integer (rounded off) and the volume of the frozen compartments and refrigeration compartments to one place after the decimal point. You can find the full range of efficiency classes at page 5. According to (EU) 2017/1369 6a.



BLU
Performance

← 60 →

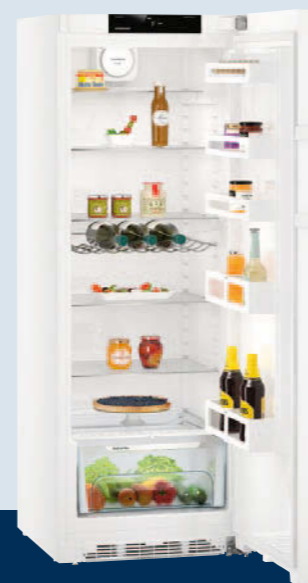


Bio
Fresh

The fresher your food, the better it is for a healthy diet. **BioFresh safes**, sited on telescopic rails, guarantee the perfect environment for greater freshness. When stored at a temperature of just over 0°C and at just the right humidity level, fruit and vegetables, fish, meat and dairy products all retain their vitamins than in a conventional refrigerator compartment.



The high-resolution, high-contrast **2.4" touchscreen monochrome display**, white on a black background, is integrated behind the door and enables intuitive temperature setting.



BLU
Performance

← 60 →



← 60 →

KBef 4330
Comfort

Bio Fresh Smart Steel Smart Device ready

Energy efficiency class: **D** ¹

Energy consumption year/24 hrs: 133/0.364 kWh ¹

Total volume²: 371 litre

Volume: Fridge: 234.5 litre/BioFresh compartment: 137.2 litre

Noise output/Sound power level: 37 dB(A)/C

Climate rating: SN-T (from +10 °C to +43 °C)

Door/side walls: Stainless steel with SmartSteel/silver

Exterior dimensions in cm (h/w/d): 185/60/66.5 ¹

K 3730
Comfort

Bio Cool Smart Device ready

Energy efficiency class: **D** ²

Energy consumption year/24 hrs: 93/0.254 kWh

Total volume²: 346 litre

Noise output/Sound power level: 37 dB(A)/C

Climate rating: SN-T (from +10 °C to +43 °C)

Door/side walls: white/white

Exterior dimensions in cm (h/w/d): 165/60/66.5

SKef 4260
Comfort

Super Silent Smart Steel

Energy efficiency class: **F** ²

Energy consumption year/24 hrs: 151/0.413 kWh ¹

Total volume²: 385 litre

Noise output/Sound power level: 33 dB(A)/B, SuperSilent

Climate rating: SN-T (from +10 °C to +43 °C)

Door/side walls: Stainless steel with SmartSteel/silver

Exterior dimensions in cm (h/w/d): 185.2/60/62.3 ¹

¹ To achieve the indicated energy consumption level, the wall spacers provided with the appliance must be used. These increase the appliance depth by approximately 3.5 cm (1.5 cm BluPerformance appliances). If the wall spacers are not used, the appliance will remain fully functional, but will have a slightly higher energy consumption level.

² In accordance with Regulation EU 2019/2016 we indicate the total volume to the nearest integer (rounded off) and the volume of the frozen compartments and refrigeration compartments to one place after the decimal point. You can find the full range of efficiency classes at page 5. According to (EU) 2017/1369 6a.

Table-height fridges



Ergonomically designed, the extra deep transparent **vegetable compartment** is easy-to-clean and provides ample storage for fruit and vegetables.



You can freeze fresh food and store frozen food for long periods in appliances with the **4-star freezer compartment**. Temperatures of -18°C and lower ensure food is stored with all the vital vitamins and minerals preserved.

Table-height freezers



No Frost

The **NoFrost** system from Liebherr provides rapid, fan-assisted, frost-free freezing for the safe, long-term storage of food. The NoFrost technology creates a much larger storage capacity and keeps the freezer constantly frost-free to make defrosting a thing of the past.



Frost Protect

100%
Performance

Many freezers are kept outside of the normal household environment so Liebherr has developed **FrostProtect** on some models to enable these models to function in low ambient temperatures. Certain models as indicated by FrostProtect will work in ambient temperatures as low as -15°C .



← 55 →



← 55 →



← 60 →



← 55 →

T 1700

Energy efficiency class: **F** **A** **G**

Energy consumption year/24 hrs: 116/0.317 kWh

Total volume²: 149 litre

Noise output/Sound power level: 37 dB(A)/C

Climate rating: SN-ST (from $+10^{\circ}\text{C}$ to $+38^{\circ}\text{C}$)

Door/side walls: white/white

Exterior dimensions in cm (h/w/d): 85/55.4/62.3

T 1504

Energy efficiency class: **F** **A** **G**

Energy consumption year/24 hrs: 180/0.493 kWh

Total volume²: 133 litre

Volume: Fridge: 116.9 litre/Freezer compartment: 16.5 litre

Noise output/Sound power level: 40 dB(A)/C

Climate rating: SN-ST (from $+10^{\circ}\text{C}$ to $+38^{\circ}\text{C}$)

Door/side walls: white/white

Exterior dimensions in cm (h/w/d): 85/55.4/62.3

GN 1066

Premium

No Frost

Energy efficiency class: **F** **A** **G**

Energy consumption year/24 hrs: 232/0.635 kWh

Total volume²: 99 litre

Noise output/Sound power level: 41 dB(A)/C

Climate rating: SN-ST (from $+10^{\circ}\text{C}$ to $+38^{\circ}\text{C}$)

Door/side walls: white/white

Exterior dimensions in cm (h/w/d): 85.1/60.2/62.8

GP 1213

Comfort

Smart Frost

Frost Protect

Energy efficiency class: **E** **A** **G**¹

Energy consumption year/24 hrs: 170/0.465 kWh¹

Total volume²: 97 litre

Noise output/Sound power level: 39 dB(A)/C

Climate rating: SN-T (from $+10^{\circ}\text{C}$ to $+43^{\circ}\text{C}$)

Designed to operate in ambient temperatures as low as -15°C

Door/side walls: white/white

Exterior dimensions in cm (h/w/d): 85.1/55.3/62.4¹

¹ To achieve the indicated energy consumption level, the wall spacers provided with the appliance must be used. These increase the appliance depth by approximately 3.5 cm. If the wall spacers are not used, the appliance will remain fully functional, but will have a slightly higher energy consumption level.

² In accordance with Regulation EU 2019/2016 we indicate the total volume to the nearest integer (rounded off) and the volume of the frozen compartments and refrigeration compartments to one place after the decimal point. You can find the full range of efficiency classes at page 5. According to (EU) 2017/1369 6a.



← 60 →



The automatic **SuperFrost** function makes freezing food simple and energy efficient. It rapidly lowers the temperature to -32°C to create the temperature levels required to preserve vitamins and enhance the flavour and texture of the food when consumed.



The removable, extra-deep drawers with transparent front are closed all the way round. They provide a perfect view of the contents and the best storage conditions for the frozen food. Freezer drawers and glass shelves can be removed. **VarioSpace** - the practical storage solution for larger produce.



← 60 →



← 60 →

GNP 3013
Comfort



Energy efficiency class: **F A G**¹
 Energy consumption year/24 hrs: 307/0.841 kWh¹
 Total volume²: 268 litre
 Noise output/Sound power level: 41 dB(A)/C
 Climate rating: SN-T (from $+10^{\circ}\text{C}$ to $+43^{\circ}\text{C}$)
 Door/side walls: white/white
 Exterior dimensions in cm (h/w/d): 184.1/60/63¹

¹ To achieve the indicated energy consumption level, the wall spacers provided with the appliance must be used. These increase the appliance depth by approximately 3.5 cm. If the wall spacers are not used, the appliance will remain fully functional, but will have a slightly higher energy consumption level.

GNP 2713
Comfort



Energy efficiency class: **F A G**¹
 Energy consumption year/24 hrs: 291/0.797 kWh¹
 Total volume²: 231 litre
 Noise output/Sound power level: 41 dB(A)/C
 Climate rating: SN-T (from $+10^{\circ}\text{C}$ to $+43^{\circ}\text{C}$)
 Door/side walls: white/white
 Exterior dimensions in cm (h/w/d): 164.4/60/63¹

² In accordance with Regulation EU 2019/2016 we indicate the total volume to the nearest integer (rounded off) and the volume of the frozen compartments and refrigeration compartments to one place after the decimal point. You can find the full range of efficiency classes at page 5. According to (EU) 2017/1369 6a.

Fridge-freezers for integrated use



The versatile **bottle shelf** above the BioFresh drawers can be used either as a bottle shelf or a glass storage shelf, both are stored in the recess.



Bio Fresh

Both **BioFresh drawers** are mounted on **telescopic rails** which extend effortlessly providing a full view of your food, which is easily accessible. The lateral **LED lights** ensure perfect illumination of the drawers.



Doors require furniture or s/steel frame & handle kit

← 91 → 203



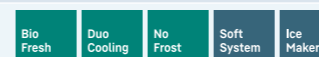
Door requires furniture or s/steel frame & handle kit

ECBN 6156 variant - 001
right hand hinge, fixed (stocked)

ECBN 6156 variant - 617
left hand hinge, fixed

← 91 → 203

ECBN 6256 PremiumPlus



Fixed door / Built-in appliance for integrated use

Energy efficiency class: **F A G**

Energy consumption year/24 hrs: 341 / 0.934 kWh

Total volume¹: 522 litre

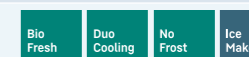
Volume: Fridge: 292.2 litre / BioFresh compartment: 70.6 litre /
Freezer compartment: 159.5 litre

Noise output / Sound power level: 40 dB(A) / C

Climate rating: SN-T (from +10 °C to +43 °C)

Aperture dimensions in cm (h/w/d): 203.2-207.2/91.5 / min. 61

ECBN 6156 PremiumPlus



Fixed door / Built-in appliance for integrated use

Energy efficiency class: **F A G**

Energy consumption year/24 hrs: 414 / 1.134 kWh

Total volume¹: 522 litre

Volume: Fridge: 292.2 litre / BioFresh compartment: 70.6 litre /
Freezer compartment: 159.5 litre

Noise output / Sound power level: 41 dB(A) / C

Climate rating: SN-T (from +10 °C to +43 °C)

Aperture dimensions in cm (h/w/d): 203.2-207.2/91.5 / min. 61

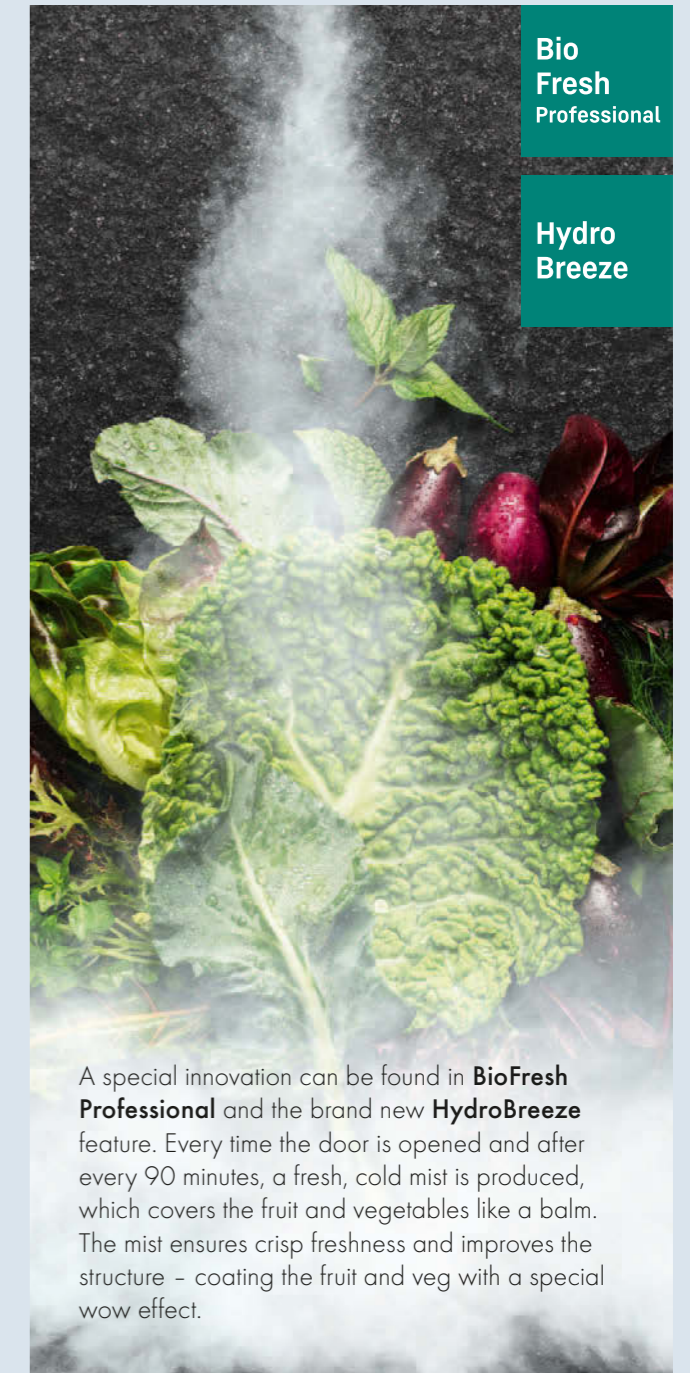
¹ In accordance with Regulation EU 2019/2016 we indicate the total volume to the nearest integer (rounded off) and the volume of the frozen compartments and refrigeration compartments to one place after the decimal point. You can find the full range of efficiency classes at page 5. According to (EU) 2017/1369 6a.

ECBN 6256

Side-by-Side fridge-freezer for integrated use



Fridge-freezer for integrated use



Bio Fresh Professional

Hydro Breeze

A special innovation can be found in **BioFresh Professional** and the brand new **HydroBreeze** feature. Every time the door is opened and after every 90 minutes, a fresh, cold mist is produced, which covers the fruit and vegetables like a balm. The mist ensures crisp freshness and improves the structure - coating the fruit and veg with a special wow effect.

SBS 7014
Premium

178

178

178

SIGN 3576
Premium Freezer

- No Frost
- Soft System
- LED
- Ice Maker
- Telescopic Rails

Fixed door/Built-in appliance for integrated use
 Energy efficiency class: **F**
 Energy consumption year/24 hrs: 298/0.816 kWh
 Total volume¹: 216 litre
 Noise output/Sound power level: 37 dB(A)/C
 Climate rating: SN-T (from +10 °C to +43 °C)
 Aperture dimensions in cm (h/w/d): 177.2-178.8/56-57/min. 55

IKBP 3560
Premium Fridge

- Bio Fresh
- Super Silent
- Soft System
- Soft-Telescopic

Fixed door/Built-in appliance for integrated use
 Energy efficiency class: **D**
 Energy consumption year/24 hrs: 125/0.342 kWh
 Total volume¹: 309 litre
 Volume: Fridge: 215.2 litre/BioFresh compartment: 94.1 litre
 Noise output/Sound power level: 34 dB(A)/B, SuperSilent
 Climate rating: SN-T (from +10 °C to +43 °C)
 Aperture dimensions in cm (h/w/d): 177.2-178.8/56-57/min. 55

ICBNdi 5183
Peak

- Bio Fresh Professional
- Duo Cooling
- No Frost
- Super Silent
- Soft System
- Glass & Steel Interior
- Light Tower
- Infinity Spring
- Ice Maker
- Smart Device
- Soft-Telescopic

Fixed door/Built-in appliance for integrated use
 Energy efficiency class: **D**
 Energy consumption year/24 hrs: 208/0.569 kWh
 Total volume¹: 246 litre
 Volume: Fridge: 104.5 litre/BioFresh compartment: 70.7 litre/Freezer compartment: 70.9 litre
 Noise output/Sound power level: 34 dB(A)/B, SuperSilent
 Climate rating: SN-ST (from +10 °C to +38 °C)
 Aperture dimensions in cm (h/w/d): 177.2-178.8/56-57/min. 55

¹ In accordance with Regulation EU 2019/2016 we indicate the total volume to the nearest integer (rounded off) and the volume of the frozen compartments and refrigeration compartments to one place after the decimal point. You can find the full range of efficiency classes at page 5. According to (EU) 2017/1369 6a.

Fridge-freezers for integrated use



Ice Maker

Are there any ice cubes left? An **IceMaker** means you never have to ask. With the IceMaker with fixed water connection, the water comes directly from the tap. The MaxIce function allows you to produce up to 1.5 kg of ice cubes a day. The ice cube separator helps to divide the drawer into any size you want – for example, ice cubes on the left, ice cream on the right – or just for ice cubes.



Duo Cooling

Accurate and independent temperature control of the fridge and freezer compartments is facilitated by **DuoCooling**: two separately adjustable cooling circuits. There is no air exchange between the fridge and freezer compartment, so that odours cannot be transferred and the stored food is prevented from drying out.



Enjoy an optimally illuminated interior: the **LightTower** shows off the food in its best light and is positioned so that all of your filled fridge is illuminated at all times. The flush mounting of the LightTower in the side walls means there is also more space for your food.



All **transparent FrostSafe drawers** are extra deep. They are designed so that all frozen foods, from a duck to a boxed pizza, will fit conveniently and neatly, and are easy to remove. Every drawer can be used for both freezing and storage, so there's no need to repack the food once it has been frozen.



178



178



178



178

ICBNd 5163 Prime

- Bio Fresh
- Duo Cooling
- No Frost
- Super Silent
- Soft System
- Glass & Steel Interior
- Light Tower
- Ice Maker
- Smart Device ready
- Soft-Telescopic

Fixed door/Built-in appliance for integrated use

Energy efficiency class: **D** **A**

Energy consumption year/24 hrs: 208/0.569 kWh

Total volume¹: 246 litre

Volume: Fridge: 104.1 litre/BioFresh compartment: 71.2 litre/
Freezer compartment: 70.9 litre

Noise output/Sound power level: 34 dB(A)/B, SuperSilent

Climate rating: SN-ST (from +10 °C to +38 °C)

Aperture dimensions in cm (h/w/d): 177.2-178.8/56-57/min. 55

ICBNd 5153 Prime

- Bio Fresh
- Duo Cooling
- No Frost
- Super Silent
- Soft System
- Glass & Steel Interior
- Light Tower
- Smart Device ready
- Soft-Telescopic

Fixed door/Built-in appliance for integrated use

Energy efficiency class: **D** **A**

Energy consumption year/24 hrs: 207/0.567 kWh

Total volume¹: 245 litre

Volume: Fridge: 104.1 litre/BioFresh compartment: 71.2 litre/
Freezer compartment: 69.9 litre

Noise output/Sound power level: 34 dB(A)/B, SuperSilent

Climate rating: SN-ST (from +10 °C to +38 °C)

Aperture dimensions in cm (h/w/d): 177.2-178.8/56-57/min. 55

ICNsf 5103 Pure

- Easy Fresh
- Duo Cooling
- No Frost
- Super Silent
- Smart Device ready

Sliding door/Built-in appliance for integrated use

Energy efficiency class: **F** **A**

Energy consumption year/24 hrs: 284/0.778 kWh

Total volume¹: 253 litre

Volume: Fridge: 183.3 litre/Freezer compartment: 69.9 litre

Noise output/Sound power level: 35 dB(A)/B, SuperSilent

Climate rating: SN-ST (from +10 °C to +38 °C)

Aperture dimensions in cm (h/w/d): 177.2-178.8/56-57/min. 55

ICSe 5103 Pure

- Easy Fresh
- Duo Cooling
- Smart Frost
- Super Silent
- Smart Device ready

Sliding door/Built-in appliance for integrated use

Energy efficiency class: **E** **A**

Energy consumption year/24 hrs: 228/0.624 kWh

Total volume¹: 264 litre

Volume: Fridge: 183.3 litre/Freezer compartment: 81.1 litre

Noise output/Sound power level: 35 dB(A)/B, SuperSilent

Climate rating: SN-T (from +10 °C to +43 °C)

Aperture dimensions in cm (h/w/d): 177.2-178.8/56-57/min. 55

¹ In accordance with Regulation EU 2019/2016 we indicate the total volume to the nearest integer (rounded off) and the volume of the frozen compartments and refrigeration compartments to one place after the decimal point. You can find the full range of efficiency classes at page 5. According to (EU) 2017/1369 6a.



IRBdi 5180

Fridge for integrated use



Infinity Spring

A source of fresh, cool drinking water in your kitchen. **InfinitySpring** sounds like something from a fairy tale. The water dispenser enables water dispensing and provides fresh, cold water. Simply press the panel with the carafe or glass, and enjoy the water. This enables you to save on purchasing bottles of water and to live more sustainably.



Bio Fresh Professional

Experience the pleasure of brightly lit fresh fruit and vegetables. The **LED BioFresh lighting** shows off the contents of your BioFresh safe in its best light. The lighting is positioned centrally above the BioFresh safes and supplemented by LED light columns on both sides. These extend into the topmost BioFresh safe ensuring bright illumination.



178

IRBdi 5180 Peak



Fixed door / Built-in appliance for integrated use

Energy efficiency class: **D**

Energy consumption year / 24 hrs: 125 / 0.342 kWh

Total volume¹: 296 litre

Volume: Fridge: 198.1 litre / BioFresh compartment: 97.9 litre

Noise output / Sound power level: 32 dB(A) / B, SuperSilent

Climate rating: SN-T (from +10 °C to +43 °C)

Aperture dimensions in cm (h/w/d): 177.2-178.8/56-57 / min. 55

¹ In accordance with Regulation EU 2019/2016 we indicate the total volume to the nearest integer (rounded off) and the volume of the frozen compartments and refrigeration compartments to one place after the decimal point. You can find the full range of efficiency classes at page 5. According to (EU) 2017/1369 6a.

Fridges for integrated use



Do you want to be sure that the cold is distributed as evenly as possible in your refrigerator? If so, the **PowerCooling** system is what you need. The fan – as powerful as it is quiet – distributes the cold air efficiently throughout the entire refrigeration compartment.



The two detachable, fridge-to-table **VarioBoxes** are perfect for storing ready-to-serve foods in the refrigerator. The Liebherr egg tray for 12 eggs fits perfectly in the large VarioBox. The accessories set comprises two VarioBoxes and a robust stainless steel securing rail. VarioBoxes can be securely attached to the door interior at various levels.



Do you want a clearly arranged place for small food items such as yoghurt pots, jam jars or tubes? Your Liebherr provides this with the **VarioSafe**. It not only creates order, but is also highly adaptable. Simply place the two-stage height-adjustable VarioSafe in the refrigerator where it suits you best.



Easy Fresh

The guarantee of market freshness in the home is our **EasyFresh-Safe**. Whether it's unpackaged vegetables or fruit, this ensures optimal storage for everything. Thanks to the air-tight closure, the food causes the humidity in the safe to rise. This keeps the food fresh for a long time.



↑
178
↓



↑
178
↓



↑
178
↓



↑
178
↓

IRBd 5151
Prime

Bio Fresh Super Silent Soft System Glass & Steel Interior Light Tower Smart Device ready Soft-Telescopic

Fixed door/Built-in appliance for integrated use

Energy efficiency class: **D** **A**

Energy consumption year/24 hrs: 164/0.449 kWh

Total volume¹: 276 litre

Volume: Fridge: 151.3 litre/BioFresh compartment: 98.4 litre/
Freezer compartment: 27.1 litre

Noise output/Sound power level: 34 dB(A)/B, SuperSilent

Climate rating: SN-T (from +10 °C to +43 °C)

Aperture dimensions in cm (h/w/d): 177.2-178.8/56-57/min. 55

IRBd 5150
Prime

Bio Fresh Super Silent Soft System Glass & Steel Interior Light Tower Smart Device ready Soft-Telescopic

Fixed door/Built-in appliance for integrated use

Energy efficiency class: **D** **A**

Energy consumption year/24 hrs: 125/0.342 kWh

Total volume¹: 296 litre

Volume: Fridge: 197.7 litre/BioFresh compartment: 98.4 litre

Noise output/Sound power level: 32 dB(A)/B, SuperSilent

Climate rating: SN-T (from +10 °C to +43 °C)

Aperture dimensions in cm (h/w/d): 177.2-178.8/56-57/min. 55

IRBe 5120
Plus

Bio Fresh Soft System Smart Device ready

Fixed door/Built-in appliance for integrated use

Energy efficiency class: **E** **A**

Energy consumption year/24 hrs: 156/0.427 kWh

Total volume¹: 294 litre

Volume: Fridge: 195.8 litre/BioFresh compartment: 98.2 litre

Noise output/Sound power level: 37 dB(A)/C

Climate rating: SN-T (from +10 °C to +43 °C)

Aperture dimensions in cm (h/w/d): 177.2-178.8/56-57/min. 55

IRe 5100
Pure

Easy Fresh Super Silent Smart Device ready

Fixed door/Built-in appliance for integrated use

Energy efficiency class: **E** **A**

Energy consumption year/24 hrs: 114/0.312 kWh

Total volume¹: 308 litre

Noise output/Sound power level: 35 dB(A)/B, SuperSilent

Climate rating: SN-T (from +10 °C to +43 °C)

Aperture dimensions in cm (h/w/d): 177.2-178.8/56-57/min. 55

¹ In accordance with Regulation EU 2019/2016 we indicate the total volume to the nearest integer (rounded off) and the volume of the frozen compartments and refrigeration compartments to one place after the decimal point. You can find the full range of efficiency classes at page 5. According to (EU) 2017/1369 6a.

Freezers for integrated use



Elegant **electronic controls** on Premium models guarantee that the chosen temperature is precisely maintained. All functions can be conveniently selected via the touch-sensitive interface. The energy-saving **LED lighting** is positioned above the transparent freezer drawers, saving space.



Ice Maker

The automatic **IceMaker** from Liebherr provides perfect ice cubes for every occasion. An integrated water filter ensures perfect water quality at all times. The electronic display indicates when the water filter needs replacing.

Under-worktop appliances for integrated use



Soft System

The stylish white **SoftSystem** mechanism, integrated in the door, conveniently cushions door movement to ensure extremely soft closure even when the door shelves are fully loaded. The door closes automatically from an opening angle of about 30°.



The **LED ceiling light** creates a high-class ambience within the refrigerator. Its beautifully designed, space-efficient housing is centrally positioned to provide a delightfully even illumination.



Side by Side

178



Side by Side

178



Side by Side

82-88



82-88



82-88

SIGN 3576 Premium



Fixed door/Built-in appliance for integrated use

Energy efficiency class: **F A G**

Energy consumption year/24 hrs: 298/0.816 kWh

Total volume¹: 216 litre

Noise output/Sound power level: 37 dB(A)/C

Climate rating: SN-T (from +10 °C to +43 °C)

Aperture dimensions in cm (h/w/d): 177.2-178.8/56-57/min. 55

SIGN 3556 Premium



Fixed door/Built-in appliance for integrated use

Energy efficiency class: **E A G**

Energy consumption year/24 hrs: 239/0.654 kWh

Total volume¹: 216 litre

Noise output/Sound power level: 37 dB(A)/C

Climate rating: SN-T (from +10 °C to +43 °C)

Aperture dimensions in cm (h/w/d): 177.2-178.8/56-57/min. 55

SUIGN 1554 Premium Freezer



Fixed door/Under-worktop appliance for integrated use

Energy efficiency class: **E A G**

Energy consumption year/24 hrs: 181/0.495 kWh

Total volume¹: 79 litre

Noise output/Sound power level:

35 dB(A)/B, SuperSilent

Climate rating: SN-T (from +10 °C to +43 °C)

Aperture dimensions in cm (h/w/d): 82-88/60/min. 55

UIK 1550 Premium Fridge



Fully extendible pull-out drawer/Under-worktop appliance for integrated use

Energy efficiency class: **F A G**

Energy consumption year/24 hrs: 114/0.312 kWh

Total volume¹: 132 litre

Noise output/Sound power level:

35 dB(A)/B, SuperSilent

Climate rating: SN-ST (from +10 °C to +38 °C)

Aperture dimensions in cm (h/w/d): 82-88/60/min. 55

UIK 1510 Comfort Fridge



Fixed door/Under-worktop appliance for integrated use

Energy efficiency class: **F A G**

Energy consumption year/24 hrs: 115/0.315 kWh

Total volume¹: 136 litre

Noise output/Sound power level:

35 dB(A)/B, SuperSilent

Climate rating: SN-ST (from +10 °C to +38 °C)

Aperture dimensions in cm (h/w/d): 82-88/60/min. 55

¹ In accordance with Regulation EU 2019/2016 we indicate the total volume to the nearest integer (rounded off) and the volume of the frozen compartments and refrigeration compartments to one place after the decimal point. You can find the full range of efficiency classes at page 5. According to (EU) 2017/1369 6a.



LED

All wine cabinets feature dimmable **LED lighting**, which evenly illuminates the interior and can be left on permanently if desired. Because LEDs generate minimal heat, wines can be sympathetically illuminated and beautifully presented for an extended period of time.

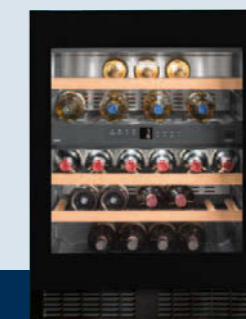


Telescopic Rails

The Vinidor appliances are equipped with solid **wooden shelves mounted on telescopic rails**. The handcrafted shelves made from untreated wood are ideal for storing Bordeaux bottles safely, providing a clear view and easy access. Storing bottles neck to neck facilitates maximum storage capacity.



Door requires furniture or s/steel frame & handle kit - Order no. 9901573



← 70 →

↑ 178 ↓

↑ 82-87 ↓

↑ 82-87 ↓

WTes 5972
Vinidor

Soft System LED Wine Telescopic Rails

Energy efficiency class: **G** ²

Energy consumption year/24 hrs: 191/0.523 kWh ²

Max. Bordeaux bottles 0.75 l: 211 ¹

Total volume³: 521 litre

Noise output/Sound power level: 38 dB(A)/C

Climate rating: SN-ST (from +10°C to +38°C)

Door/side walls: Glass door with stainless steel frame/stainless steel

Exterior dimensions in cm (h/w/d): 192/70/74.2 ²

EWtdf 3553
Vinidor

Soft System LED Wine Telescopic Rails

Fixed door/Built-in appliance with decor panel

Energy efficiency class: **G** ²

Energy consumption year/24 hrs: 178/0.487 kWh

Max. Bordeaux bottles 0.75 l: 80 ¹

Total volume³: 254 litre

Noise output/Sound power level: 32 dB(A)/B, SuperSilent

Climate rating: SN-ST (from +10°C to +38°C)

Insulated glass door prepared for cabinet door or stainless steel front

Aperture dims. in cm (h/w/d): 177.2-178/56-57/min. 55

UWTgb 1682
Vinidor

Soft System LED Wine Tip Open Telescopic Rails

flush/Under-worktop appliance

Energy efficiency class: **G** ²

Energy consumption year/24 hrs: 146/0.400 kWh

Max. Bordeaux bottles 0.75 l: 34 ¹

Total volume³: 94 litre

Noise output/Sound power level: 35 dB(A)/B, SuperSilent

Climate rating: SN-ST (from +10°C to +38°C)

black insulated glass door, handle and frame free

Aperture dimensions in cm (h/w/d): 82-87/60/min. 58

UWTes 1672
Vinidor

LED Wine Telescopic Rails

flush/Under-worktop appliance

Energy efficiency class: **G** ²

Energy consumption year/24 hrs: 142/0.389 kWh

Max. Bordeaux bottles 0.75 l: 34 ¹

Total volume³: 94 litre

Noise output/Sound power level: 38 dB(A)/C

Climate rating: SN-ST (from +10°C to +38°C)

Glass door with stainless steel frame

Aperture dimensions in cm (h/w/d): 82-87/60/min. 58

¹ These models are only bound for storing wine. Maximum DIN norm bordeaux bottles capacity (0.75 l) as per norm NF H 35-124 (H: 300.5 mm, Ø 76.1 mm)
² To achieve the indicated energy consumption level, the wall spacers provided with the appliance must be used. These increase the appliance depth by approximately 3.5 cm. If the wall spacers are not used, the appliance will remain fully functional, but will have a slightly higher energy consumption level.

³ In accordance with Regulation EU 2019/2016 we indicate the total volume to the nearest integer (rounded off) and the volume of the frozen compartments and refrigeration compartments to one place after the decimal point. You can find the full range of efficiency classes at page 5. According to (EU) 2017/1369 6a.

Liebherr After Sales & Customer Care



2 Year Warranty

All Liebherr appliances have a full 2 year warranty covering parts and labour. If any part of the machine fails or a fault develops through normal use, it will be repaired free of charge (in accordance with terms and conditions on our warranty card).



5 Year Warranty (added Security)

Naa are the distributor for Liebherr within Ireland and as we have such confidence in Liebherr we are offering a further 3 year parts and labour warranty on selected models within the range (terms & conditions apply) to total 5 years cover. Extended warranty must be registered and purchased directly with Naa only.*

- Freestanding under counter units – € 30
- Built In units with no IceMaker – € 80
- Built In units with IceMaker – € 100
- All wine appliances – € 100

* Warranty is on registration only. Customer must install appliance as per manufacturer's instructions. Accidental damages to parts are not covered. Customer must register within 3 months of purchase. Service calls must be carried out by authorised Liebherr engineers. For further information please go to www.myliebherr.ie.



Customer Care

Our National Customer Care Centre can be contacted should you require instructions or service. Please call 01 4600064 or you can email liebherr@naa.ie.

Spare Parts Direct

To order spare parts or accessories please call 01 4600064 or email liebherr@naa.ie with the model and 9 digit service number.

The parts or accessories can be quickly despatched direct to your home.

Liebherr's Killarney Hotels Ltd.



Ard na Sidhe Country House



Hotel Dunloe Castle



The Europe Hotel & Resort

Liebherr's Killarney Hotels Ltd. owns and operates two five-star luxury hotels in Killarney, including The Europe Hotel & Resort, situated on the famous Lakes of Killarney and Hotel Dunloe Castle overlooking the Gap of Dunloe. The company also owns and manages Ard na Sidhe Country House, a delightful Victorian style manor house, which is situated on the shores of Caragh Lake just outside Killorglin. The Liebherr Group has been active in Ireland since 1958, when Liebherr (Ireland) Ltd. was founded in Killarney, Co. Kerry. Initially, this company manufactured large tower cranes. During the following decades, Liebherr's portfolio in Ireland has been significantly enlarged. Today, the Liebherr Group comprises three Irish companies operating in the sectors of maritime cranes, construction machinery and hotels, which are employing a total workforce of about 1200 people.

naa appliances ltd · wogan house · crosslands bus park · lwr ballymount road · Dublin 12
Tel.: 01 4600064 · Fax.: 01 4600073 · www.myliebherr.ie

